

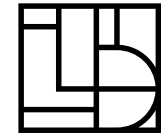


LINIE DESIGN ARTWORK



LINIE DESIGN

HANDMADE RUGS



LINIE DESIGN

ARTWORK



GENOVA PETROL





# INDEX

DESIGN	IMAGE	INFO
GENOVA	P 01	P 54
BOLOGNA	P 06	P 38
MATTIA	P 07	P 48
LUA	P 09	P 40
NIKA	P 10	P 41
VERO	P 13	P 52
GRAPHIC	P 15	P 47
VITALIA	P 16	P 50
CHES	P 18	P 43
MEMO	P 20	P 44
LINCA	P 23	P 53
SHARED	P 24	P 49
LAGOS	P 26	P 46
UNIT	P 28	P 45
LUBO	P 30	P 51
SMILLA	P 33	P 42
SIRIUS	P 35	P 55



# WELCOME TO ARTWORK

---

Acknowledged Danish designers and highly skilled Indian weavers work together to ensure very exclusive collections: Streamlined, though handmade; functional though aesthetic. Beautiful colours, outstanding materials and dynamic renewal are a matter of course, whilst the environment is top of mind.

You buy a rug, but you also enrich your life with long-lasting fascination for high-quality rugs.





**BOLOGNA** POWDER



**MATTIA** WHITE



AS NORTHERN EUROPE'S BIGGEST  
DEVELOPER OF **HANDMADE**  
RUGS LINIE DESIGN AIMS TO FILL  
HOMES WITH **BEAUTIFUL** RUGS  
EVERYWHERE IN THE WORLD.







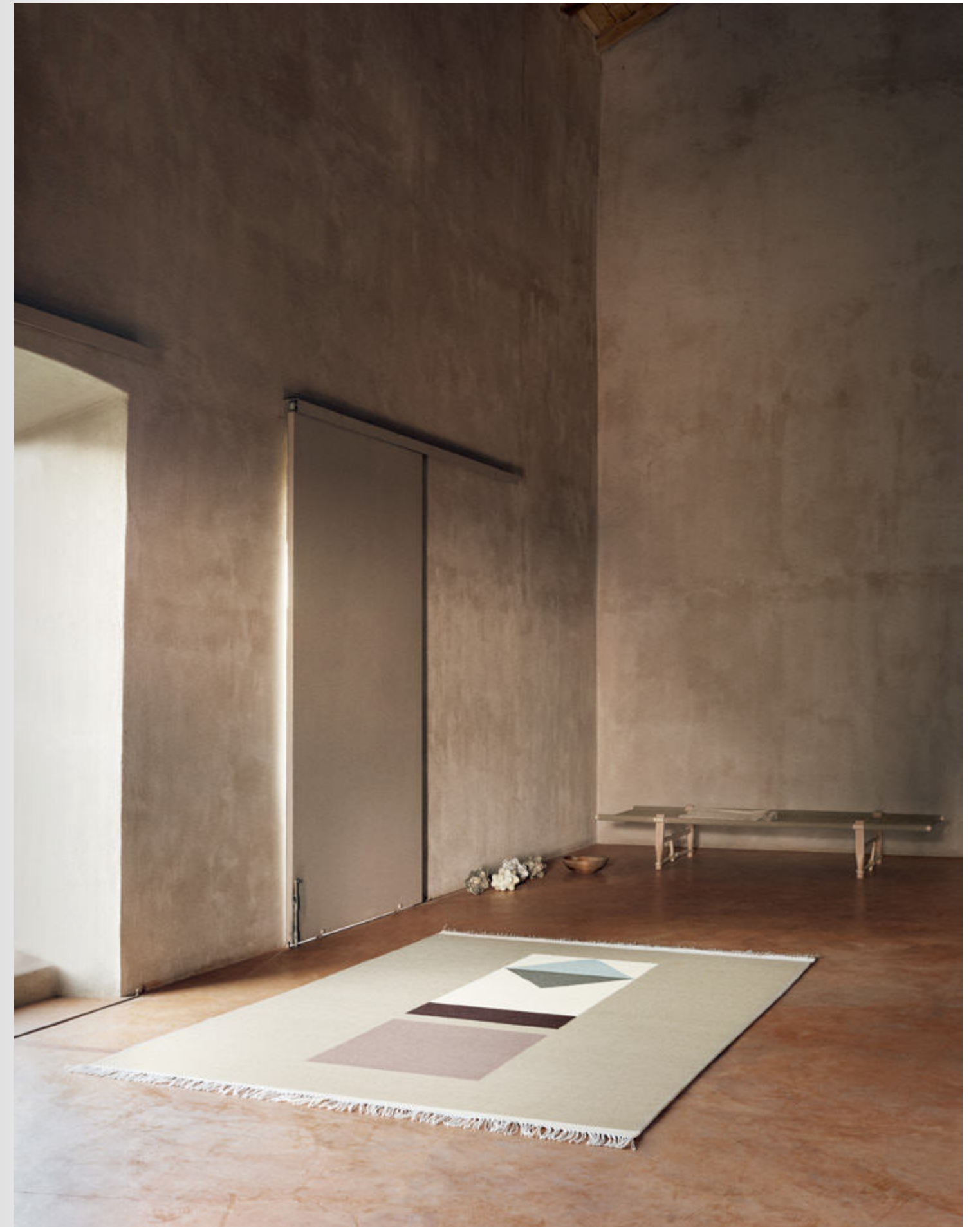
NIKA BLUE



Artwork · page 11



FOUNDED IN DENMARK BACK  
IN 1980, OUR **ROOTS** ARE  
THOROUGHLY NORDIC. THE  
SIMPLE, THOUGH HIGHLY  
**AESTHETIC** COLLECTIONS  
PROVE OUR **SCANDINAVIAN**  
APPROACH TO DESIGN.



VERO SAND









VITALIA ANTHRACITE

ALL RUGS ARE **MADE BY HAND**, AND THESE HANDS BELONG TO SOME OF THE WORLD'S MOST DEDICATED AND **TALENTED** WEAVERS, WHO HAVE REFINED SKILLS THROUGH **GENERATIONS**.









FOCUS IS ON DESIGN, BUT WE ALSO THINK ABOUT THE **WEAVERS** AND THEIR **FAMILIES**. THEREFORE, WE PROVIDE SAFE WORKING CONDITIONS, AND ENSURE EDUCATION FOR 350 KIDS AT THE LINIE DESIGN **SCHOOL**.









SHARED SAND

IN RESPECT TO THE  
**TRADITIONAL** WEAVING  
TECHNIQUES, LEADING  
DANISH DESIGNERS  
CHALLENGE **PATTERNS,**  
**COLOURS** AND **MATERIALS.**  
THE OUTPUT IS OUTSTANDING,  
THOUGH SIMPLE AND  
TIMELESS.



















**QUALITY**, INNOVATION, KNOW-HOW AND **RESPONSIBILITY** ARE WEAVED INTO ALL ACTIVITIES. AS A RESULT, CUSTOMERS ENJOY BOTH SURPRISING BEAUTY AND GOOD **CONSCIENCE** YEAR AFTER YEAR.



SIRIUS GREY



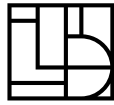
# ARTWORK OVERVIEW

---

A Nordic expression with an international touch. Playful, though aesthetic. Geometric and asymmetric at the same time. Materials are mixed; structures clash and make wonders. Despite challenging combinations, the rugs stand out in peaceful balance.

The simple look tributes the pure handicraft. All rugs are made by hand, they are two-sided, tight in texture, and most of them can be made in custom sizes.





Model BOLOGNA  
 Designer BODIL JERICHAU  
 Sizes (in cm) 90/160, 140/200, 170/240,  
 200/300, 220/220, 250/350  
 Quality HAND-WOVEN  
 Material WOOL & FLAX Fringes NO



STONE



NATURAL



WHITE/BLACK



GREY



BLACK



OCEAN



POWDER

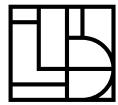
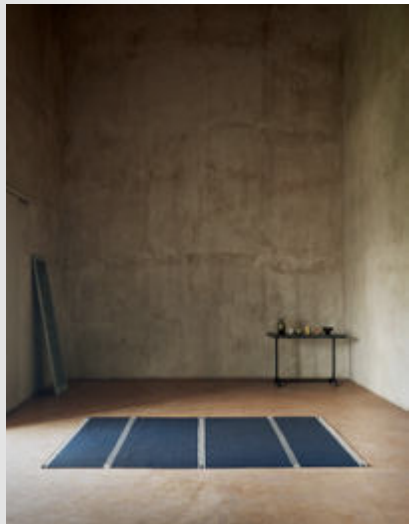


LIME





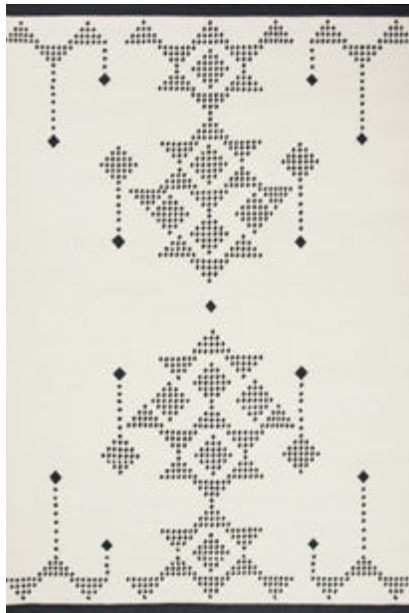
Model LUA  
 Designer URD MOLL GUNDERMANN  
 Sizes (in cm) 140/200, 170/240, 200/300  
 Quality HAND-WOVEN  
 Material NZ WOOL & VISCOSE Fringes YES



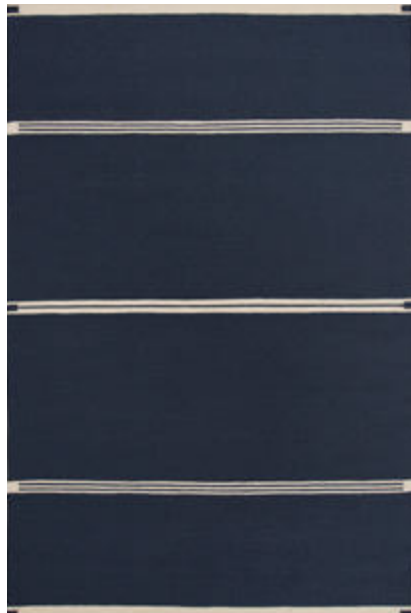
Model NIKA  
 Designer URD MOLL GUNDERMANN  
 Sizes (in cm) 80/200, 140/200, 170/240, 200/300  
 Quality HAND-WOVEN  
 Material NZ WOOL Fringes NO



OCEAN



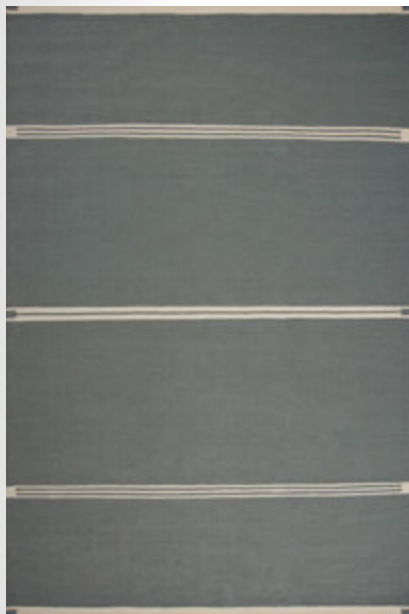
WHITE



BLUE



AQUA

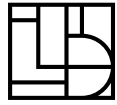


STONE

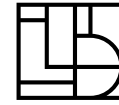
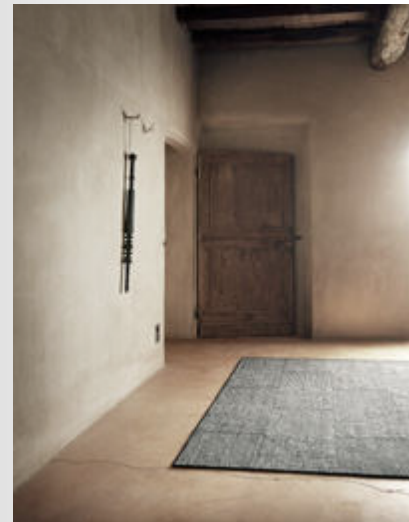


SAND





*Model* SMILLA  
*Designer* HANNE KORTEGAARD  
*Size (in cm)* 80/180  
*Quality* HAND-WOVEN  
*Material* NZ WOOL & POLYESTER *Fringes* YES



*Model* CHESS  
*Designer* KIM NAVER  
*Sizes (in cm)* 90/160, 140/200, 170/240,  
 200/300, 250/250, 250/350  
*Quality* HAND-WOVEN  
*Material* WOOL & FLAX *Fringes* NO



GREY



MOSS



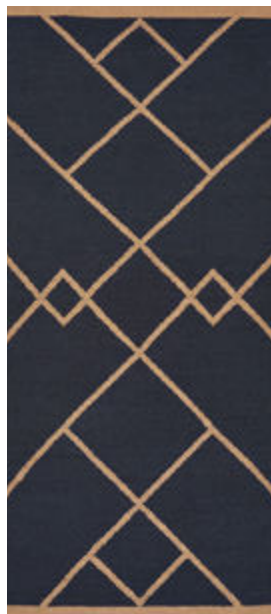
WHITE



LIGHT GREY



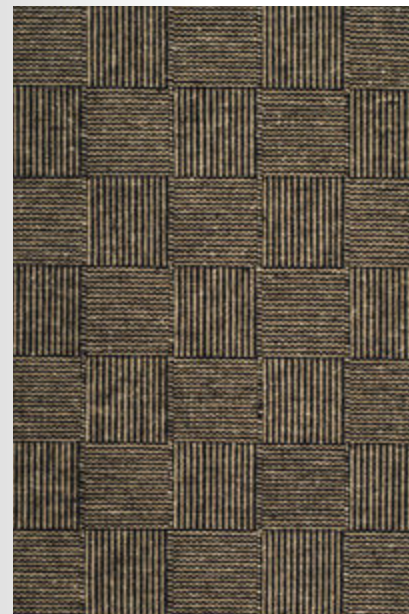
CHARCOAL



BLUE



WHITE



BLACK

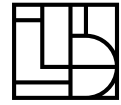


MOSS

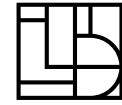
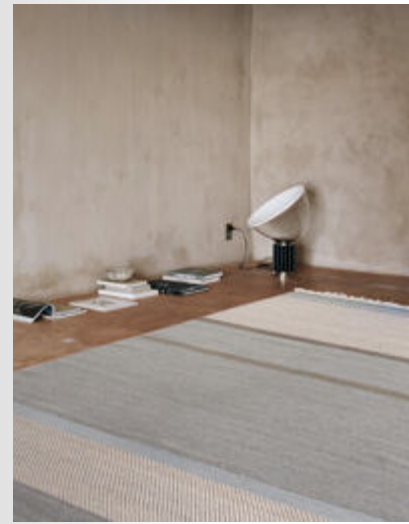


OCEAN





*Model* MEMO  
*Designer* URD MOLL GUNDERMANN  
*Sizes (in cm)* 140/200, 170/240, 200/300  
*Quality* HAND-WOVEN  
*Material* NZ WOOL & POLYESTER *Fringes* YES



*Model* UNIT  
*Designer* URD MOLL GUNDERMANN  
*Sizes (in cm)* 80/150, 140/200, 170/240, 200/300, 250/350  
*Quality* HAND-WOVEN  
*Material* WOOL, FLAX & POLYESTER *Fringes* YES



MOSS



RUST



BLUE



GREEN



BEIGE



BLUE

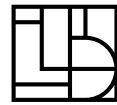


WINE

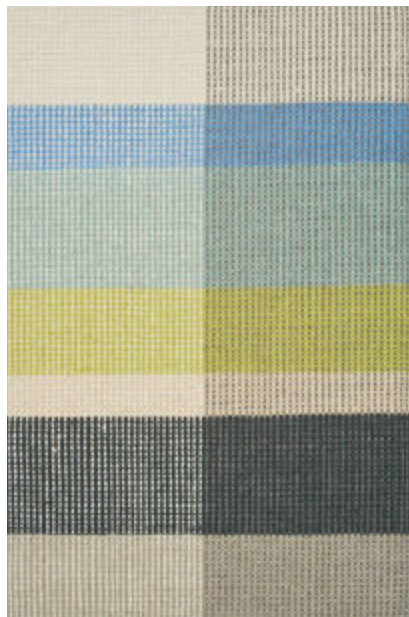




*Model* LAGOS  
*Designer* PERNILLE MØLLER FOLCARELLI  
*Sizes (in cm)* 140/200, 170/240, 200/300  
*Quality* HAND-WOVEN  
*Material* WOOL & FLAX *Fringes* NO



*Model* GRAPHIC  
*Designer* PIA SCHARBAU  
*Sizes (in cm)* 140/200, 170/240, 200/300  
*Quality* HAND-WOVEN  
*Material* NZ WOOL *Fringes* NO



LEAF



GREEN



POWDER



ROSE



HEATHER



BLUE



ORANGE





*Model* MATTIA  
*Designer* HANNE KORTEGAARD  
*Sizes (in cm)* 140/200, 170/240, 200/300,  
250/250, 250/350, 300/400\*  
*Quality* HAND-WOVEN  
*Material* NZ WOOL & POLYESTER *Fringes* YES

\* THIS SIZE IS ONLY AVAILABLE IN WHITE



WHITE



LEAF



STONE



DARK BLUE



*Model* SHARED  
*Designer* HANNE KORTEGAARD  
*Sizes (in cm)* 140/200, 170/240, 200/300  
*Quality* HAND-WOVEN  
*Material* NZ WOOL *Fringes* NO



AQUA



LAVENDER



SAND

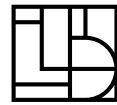


YELLOW





*Model* VITALIA  
*Designer* HANNE KORTEGAARD  
*Sizes (in cm)* 140/200, 170/240, 200/300  
*Quality* HAND-WOVEN  
*Material* NZ WOOL & FLAX *Fringes* YES



*Model* LUBO  
*Designer* URD MOLL GUNDERMANN  
*Sizes (in cm)* 140/200, 170/240, 200/300  
*Quality* HAND-WOVEN  
*Material* NZ WOOL *Fringes* NO



MUSTARD



POWDER



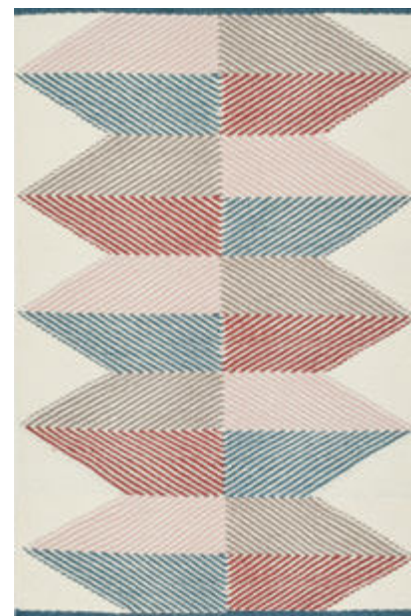
BLUE



JADE



ANTHRACITE



WINE





*Model* VERO  
*Designer* HANNE KORTEGAARD  
*Sizes (in cm)* 80/250, 140/200, 170/240, 200/300  
*Quality* HAND-WOVEN  
*Material* NZ WOOL & POLYESTER *Fringes* YES



WHITE



SAND



GREY



CREAM



*Model* LINCA  
*Designer* KIM NAVER  
*Sizes (in cm)* 140/200, 170/240, 200/300  
*Quality* HAND-WOVEN  
*Material* NZ WOOL *Fringes* NO



BEIGE



DARK BLUE

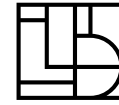


PETROL





*Model* GENOVA  
*Designer* GITTE-ANNETTE KNUDSEN  
*Sizes (in cm)* 140/200, 170/240, 200/300, 250/300  
*Quality* HAND-WOVEN  
*Material* NZ WOOL & FLAX *Fringes* NO



*Model* SIRIUS  
*Designer* GITTE-ANNETTE KNUDSEN  
*Sizes (in cm)* 140/200, 170/240, 200/300, 250/350  
*Quality* HAND-WOVEN  
*Material* NZ WOOL *Fringes* NO



SAND



GREY



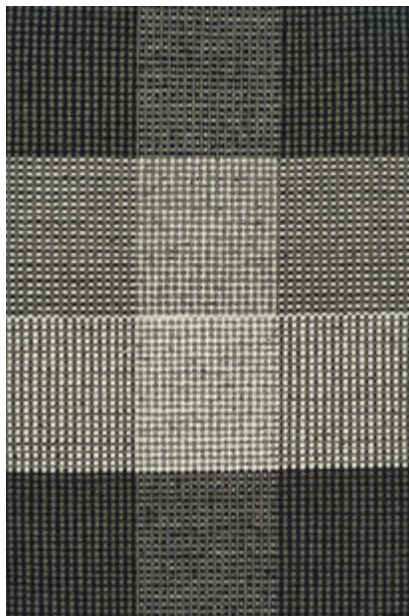
WHITE



NATURAL



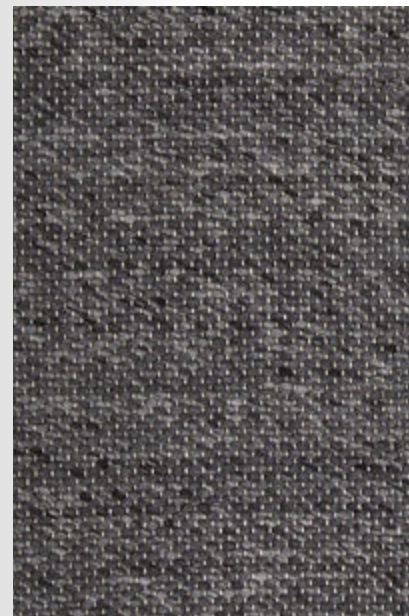
GREY



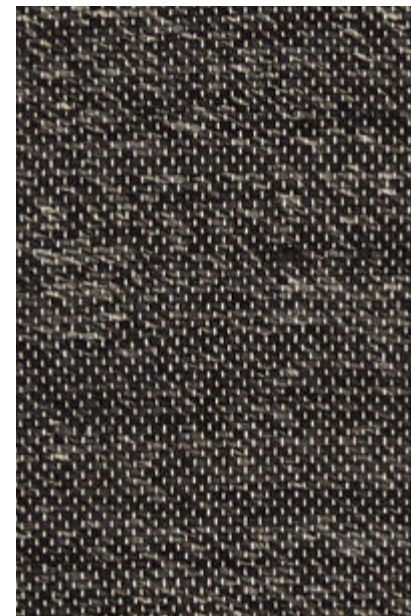
BLACK



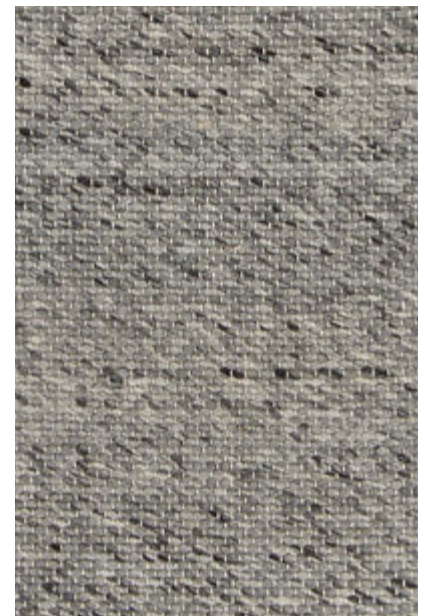
PETROL



METAL



CHARCOAL



STONE





# DESIGN MATTERS

---

Our beautiful rugs take their very beginning at the designers' desks. And only the best ones are at our team. Acknowledged Danish designers put pen to paper and play with colours, patterns and materials. Habits and techniques are constantly challenged. What rises, is exclusive and original collections, which bring surprising beauty into homes everywhere in the world.





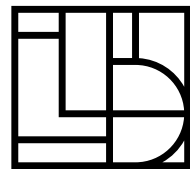
# DESIGNERS

GITTE-ANNETTE KNUDSEN  
KIM NAVER  
HANNE KORTEGAARD  
PIA SCHARBAU  
BODIL JERICHAU  
PERNILLE MØLLER FOLCARELLI  
URD MOLL GUNDERMANN

---

**THANK YOU**  
BROSTE COPENHAGEN  
EXCEL  
FIL DE FER  
FLOS  
GENBYG  
GURLI ELBÆKGAARD  
HAY  
IN A CIRCLE  
JANNI GODTLIEBSEN  
KLASSIK COPENHAGEN  
KNOLL V/ CASA SHOP  
MONTANA  
MUUBS  
OLIVER GUSTAV  
OX DENMARQ  
STENHOLT GLAS  
SKOVSHOVED MØBELFABRIK





LINIE DESIGN

HANDMADE RUGS

**LINIE DESIGN**

GRANLYET 7 · 3540 LYNGE · DENMARK

T: +45 48 18 90 66 · INSTAGRAM: @LINIEDESIGN

[WWW.LINIEDESIGN.COM](http://WWW.LINIEDESIGN.COM)